



Purple prism trap

Sticky trap for Emerald ash borer
(*Agrilus planipennis*)

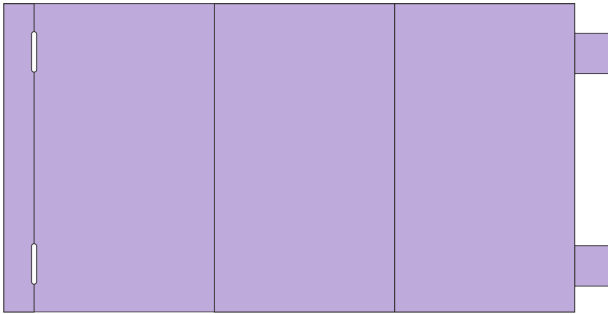
Specifications

Colour: Purple
Sticky exterior Sold per pair

Material: Polypropylene
Weight: 517 grams

Diameter: 43 cm
Height: 60 cm

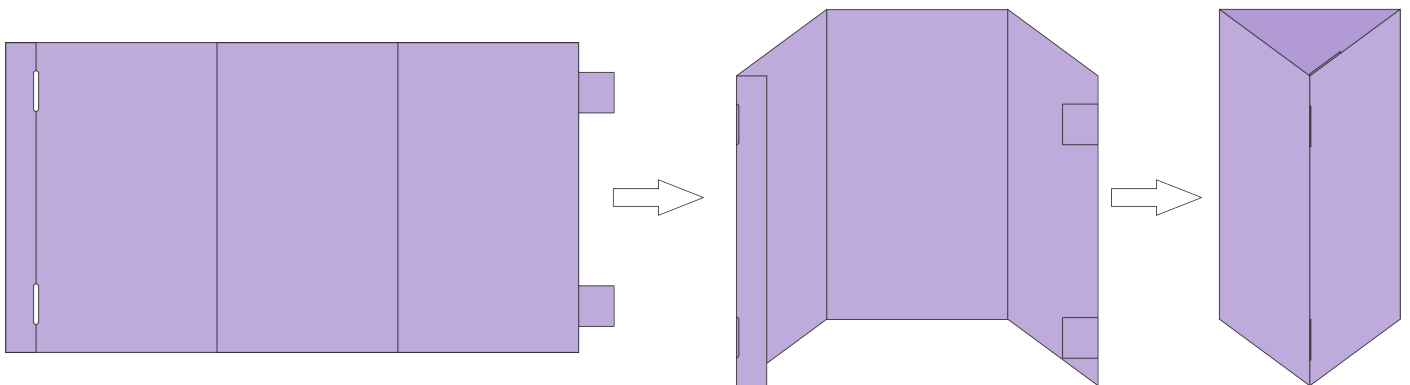
Components



1. Prism trap

2. Hanger (not shown)

Assembly



1. Fold the trap along the indented lines.
2. Insert the tabs in the slits, making sure that the short flap is on the inside of the prism. The tabs will end up on the inside of the prism after insertion.
3. Insert the hooks of the metal hanger through the holes at the top of the prism.

